

## Overview

**ALTO<sup>®</sup> LMS** is an open-source Learning Management System designed to help organisations deliver, manage, and track online learning. It provides a flexible and scalable platform for any academy, corporate training, and professional development programs.

With its modular architecture, **ALTO<sup>®</sup> LMS** enables users and administrators to create engaging learning experiences through interactive content, assessments, collaboration tools, and analytics.

## Key Features

### 1. Course Management

- Create and manage unlimited courses
- Organise learning materials with modules and topics
- Support for multimedia content (videos, PDFs, SCORM, H5P)

### 2. User & Role Management

- Multiple user roles (Administrator, Trainer, Instructor, Student, Manager)
- Role-based permissions and access control
- Bulk user upload and automated enrollment options



### 3. Assessments & Grading

- Online quizzes with multiple question types
- Assignments with file submissions
- Automated grading and gradebook management

### 4. Collaboration Tools

- Discussion forums
- Messaging and announcements
- Group-based activities and peer learning

### 5. Learning Analytics

- Track learner progress and completion
- Activity reports and performance analytics
- Customisable dashboards

### 6. Mobile Learning

- Compatible with the Moodle mobile app
- Access courses anytime, anywhere

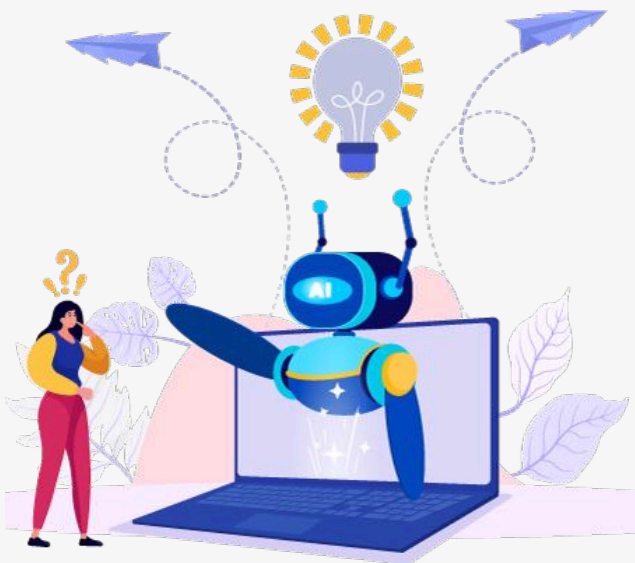


## Benefits

- **Cost-effective** – Open-source, scalable, and flexible platform
- **Highly customizable** – Extensive plugins and themes available
- **Scalable** – Suitable for small to large enterprises
- **Secure** – Regular updates and strong community support
- **Easy adoption** – Start small and scale. Used by airlines, academies, SME companies, and government organisations

## AI Features

- **AI Explain Button:** Trainees get instant, easy-to-understand explanations of complex topics
- **Policy Management:** Define and enforce AI usage guidelines for responsible use
- **Trainer Support:** AI assists with creating quizzes, summaries, and learning materials
- **Accessibility:** Generates enhanced descriptions to support inclusive learning
- **Efficiency Boost:** Reduces manual effort and speeds up content creation
- **Smart Insights:** Helps identify learning gaps and improve training outcomes



## What's Coming Next

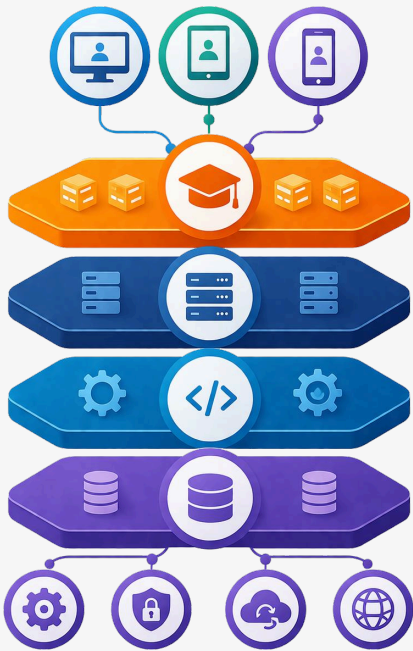
- **Deeper personalisation** through adaptive learning paths.
- **AI-driven analytics** to identify at-risk students earlier.
- **AI-powered grading support** for open-ended assessments.
- **Expanded integrations** with third-party AI services.

## Use Cases

- Airlines
- Training Organisations
- Corporate Training Programs
- Certification & Skill Development
- Employee Onboarding
- Compliance Training



## Technical Specifications



Category	Details
Platform Type	Open Source LMS
Deployment	Cloud or On-Premise
Technology Stack	PHP, MySQL/PostgreSQL
Integration	SCORM, LTI, REST APIs
Authentication	LDAP, OAuth, SAML
Supported Devices	Desktop, Tablet, Mobile
Browser Support	Chrome, Firefox, Safari, Edge

## Other Products offered:

- ALTO<sup>®</sup> Suite (TMS, TPMS)
- ALTO<sup>®</sup> Digital Training Records (DTR)
- ALTO<sup>®</sup> Academy
- PeopleFluent Talent Management
- PeopleFluent LMS
- PeopleFluent Exams

